

**SOCS4 Antibody (Center)**  
**Affinity Purified Rabbit Polyclonal Antibody (Pab)**  
**Catalog # AP14548c****Specification**

---

**SOCS4 Antibody (Center) - Product Information**

Application	WB,E
Primary Accession	<a href="#">Q8WXH5</a>
Other Accession	<a href="#">NP_955453.1</a> , <a href="#">NP_543143.1</a>
Reactivity	Human
Host	Rabbit
Clonality	Polyclonal
Isotype	Rabbit IgG
Calculated MW	50623
Antigen Region	224-253

**SOCS4 Antibody (Center) - Additional Information****Gene ID** 122809**Other Names**

Suppressor of cytokine signaling 4, SOCS-4, Suppressor of cytokine signaling 7, SOCS-7, SOCS4, SOCS7

**Target/Specificity**

This SOCS4 antibody is generated from rabbits immunized with a KLH conjugated synthetic peptide between 224-253 amino acids from the Central region of human SOCS4.

**Dilution**

WB~~1:1000

E~~Use at an assay dependent concentration.

**Format**

Purified polyclonal antibody supplied in PBS with 0.09% (W/V) sodium azide. This antibody is purified through a protein A column, followed by peptide affinity purification.

**Storage**

Maintain refrigerated at 2-8°C for up to 2 weeks. For long term storage store at -20°C in small aliquots to prevent freeze-thaw cycles.

**Precautions**

SOCS4 Antibody (Center) is for research use only and not for use in diagnostic or therapeutic procedures.

**SOCS4 Antibody (Center) - Protein Information****Name** SOCS4

## Synonyms SOCS7

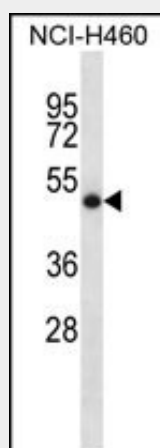
**Function** SOCS family proteins form part of a classical negative feedback system that regulates cytokine signal transduction. Substrate- recognition component of a SCF-like ECS (Elongin BC-CUL2/5-SOCS-box protein) E3 ubiquitin-protein ligase complex which mediates the ubiquitination and subsequent proteasomal degradation of target proteins. Inhibits EGF signaling by mediating the degradation of the Tyr-phosphorylated EGF receptor/EGFR.

## SOCS4 Antibody (Center) - Protocols

Provided below are standard protocols that you may find useful for product applications.

- [Western Blot](#)
- [Blocking Peptides](#)
- [Dot Blot](#)
- [Immunohistochemistry](#)
- [Immunofluorescence](#)
- [Immunoprecipitation](#)
- [Flow Cytometry](#)
- [Cell Culture](#)

## SOCS4 Antibody (Center) - Images



SOCS4 Antibody (Center) (Cat. #AP14548c) western blot analysis in NCI-H460 cell line lysates (35ug/lane). This demonstrates the SOCS4 antibody detected the SOCS4 protein (arrow).

## SOCS4 Antibody (Center) - Background

The protein encoded by this gene contains a SH2 domain and a SOCS BOX domain. The protein thus belongs to the suppressor of cytokine signaling (SOCS), also known as STAT-induced STAT inhibitor (SSI), protein family. SOCS family members are known to be cytokine-inducible negative regulators of cytokine signaling. Two alternatively spliced transcript variants encoding the same protein have been found for this gene.

## SOCS4 Antibody (Center) - References

Hu, G., et al. J. Infect. Dis. 202(1):125-135(2010)  
Han, S., et al. Hum. Immunol. 71(7):727-730(2010)

Rajaraman, P., et al. Cancer Epidemiol. Biomarkers Prev. 19(5):1356-1361(2010)  
Sasi, W., et al. BMC Cancer 10, 178 (2010) :  
Rajaraman, P., et al. Cancer Epidemiol. Biomarkers Prev. 18(5):1651-1658(2009)